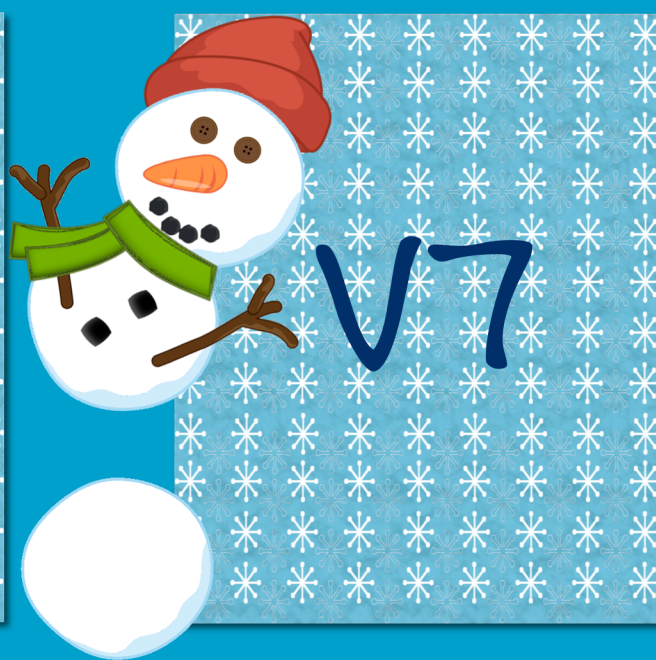
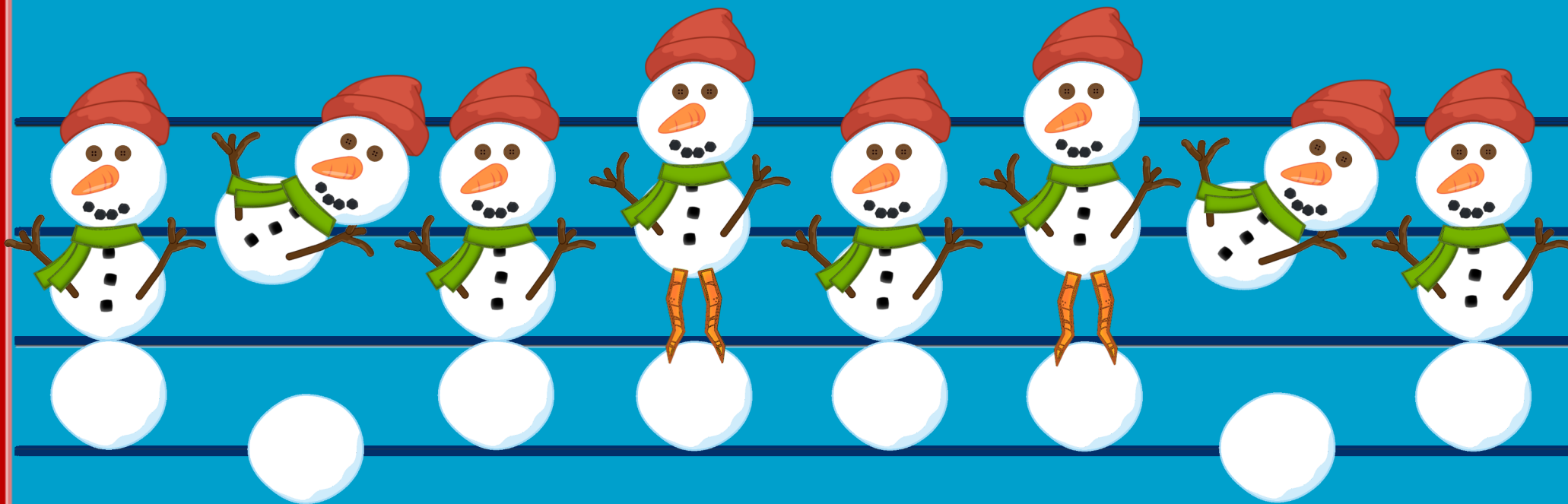


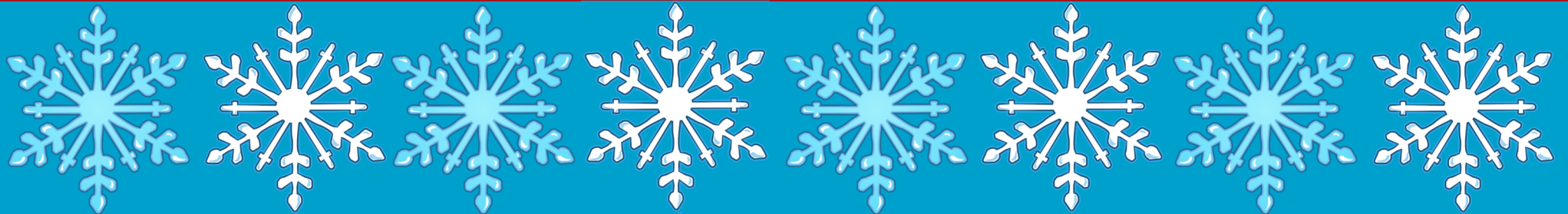
# Muñecos de nieve TONALES



Muñecos de nieve  
TONALES



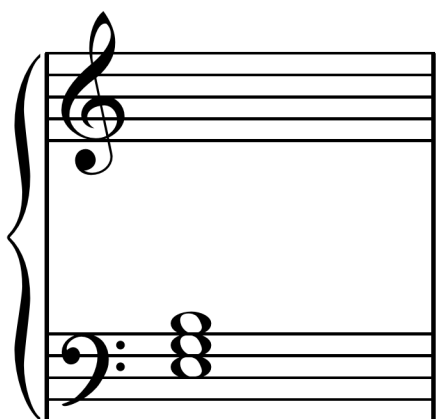
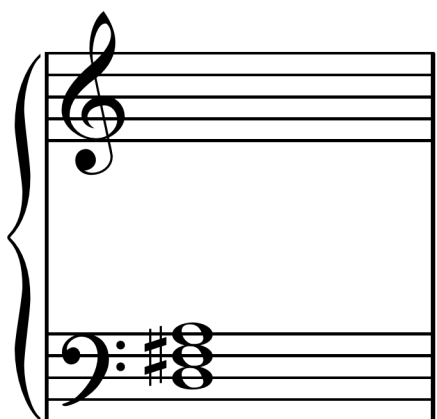
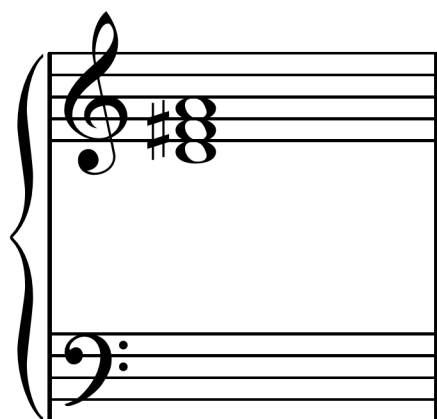
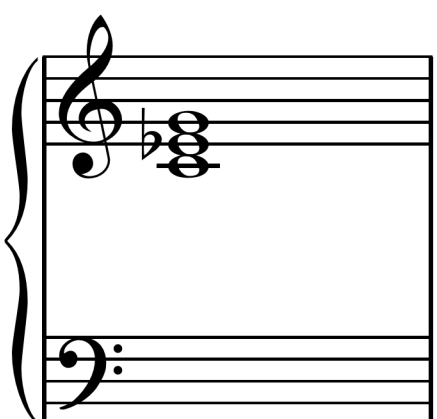
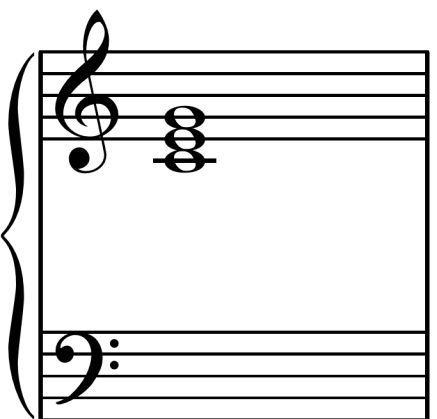
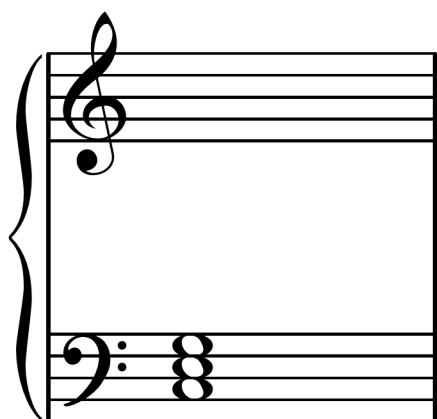
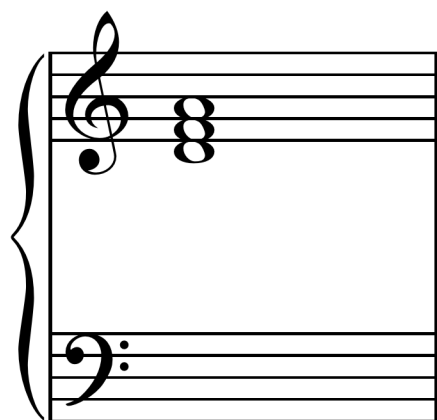
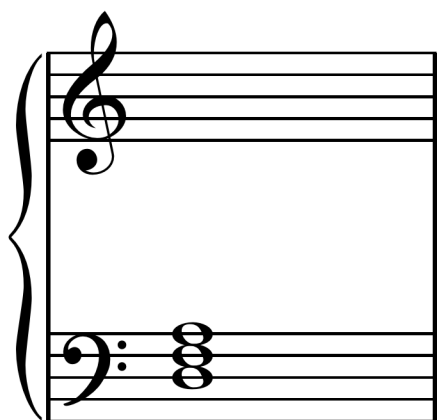
I



V



IV



Musical staff with treble clef and bass clef. The bass clef contains a chord of G<sub>2</sub>, B<sub>1</sub>, and D<sub>2</sub>.

Musical staff with treble clef and bass clef. The treble clef contains a chord of G<sub>4</sub>, B<sub>4</sub>, and D<sub>5</sub>.

Musical staff with treble clef and bass clef. The treble clef contains a chord of F<sub>4</sub><sup>#</sup>, A<sub>4</sub>, and C<sub>5</sub>. A flat key signature is present.

Musical staff with treble clef and bass clef. The bass clef contains a chord of G<sub>2</sub>, B<sub>1</sub>, and D<sub>2</sub>. A sharp key signature is present.

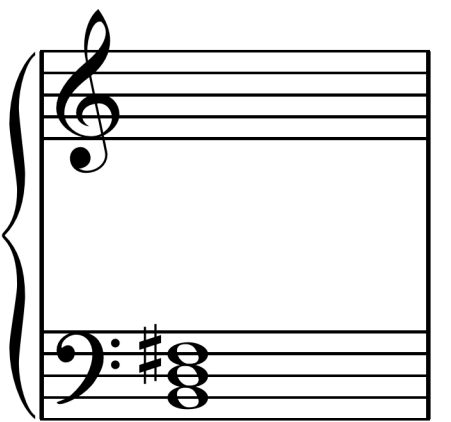
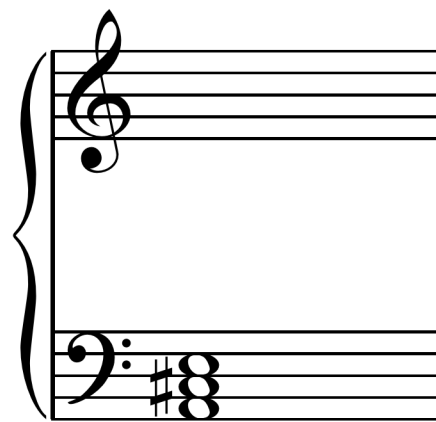
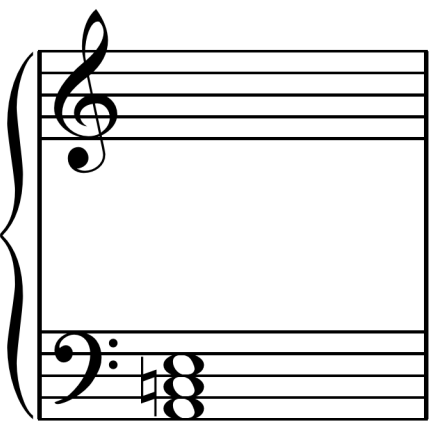
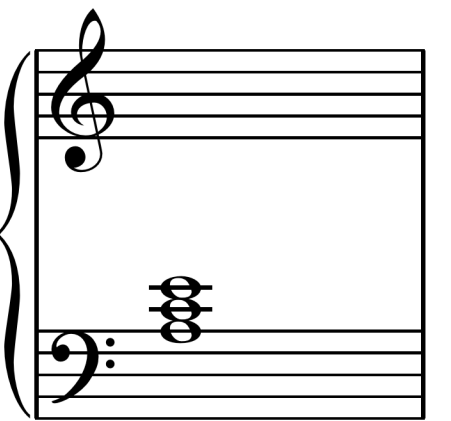
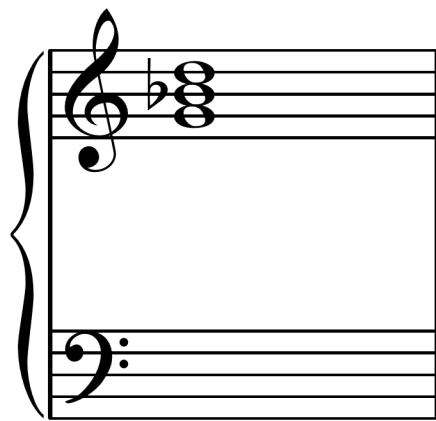
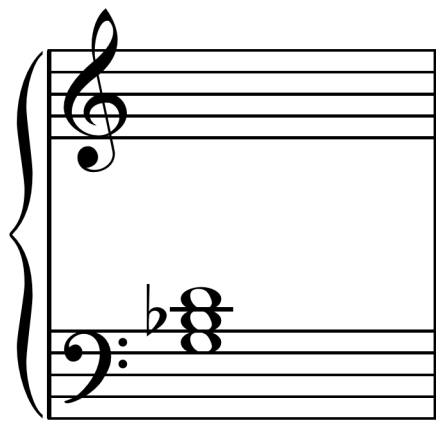
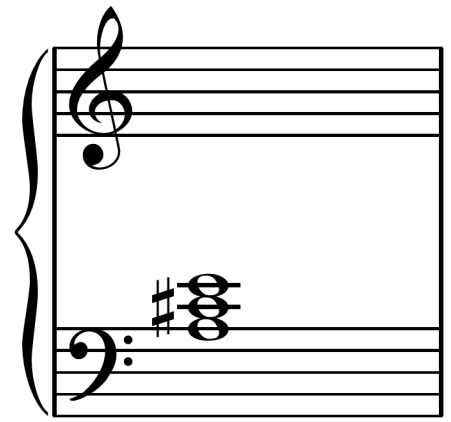
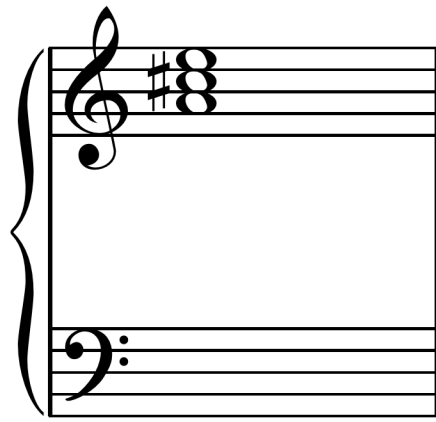
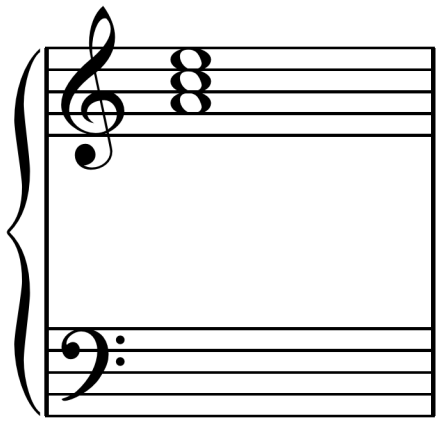
Musical staff with treble clef and bass clef. The treble clef contains a chord of G<sub>4</sub>, B<sub>4</sub>, and D<sub>5</sub>.

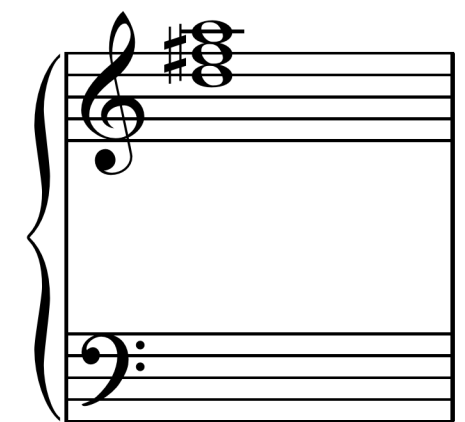
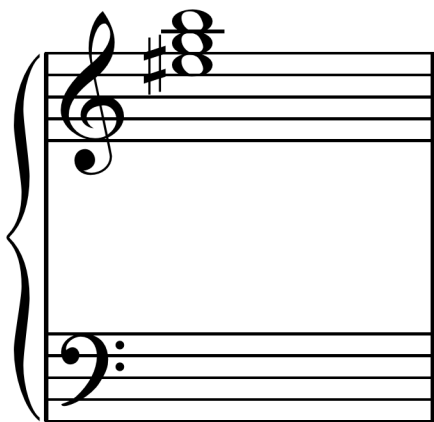
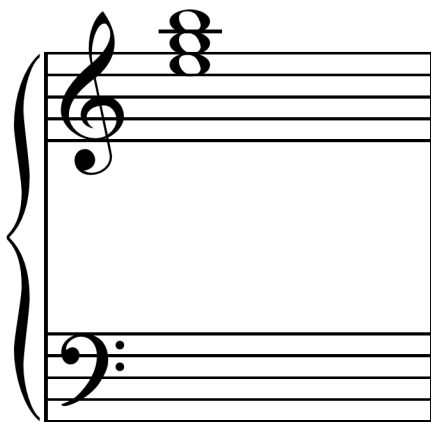
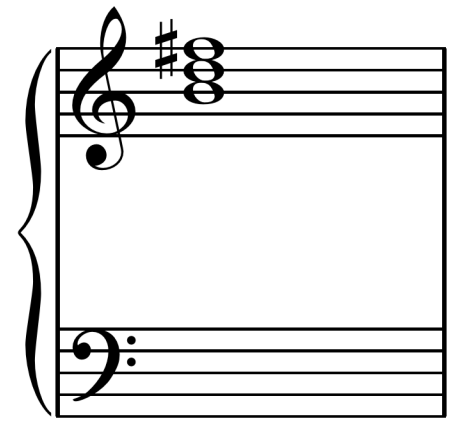
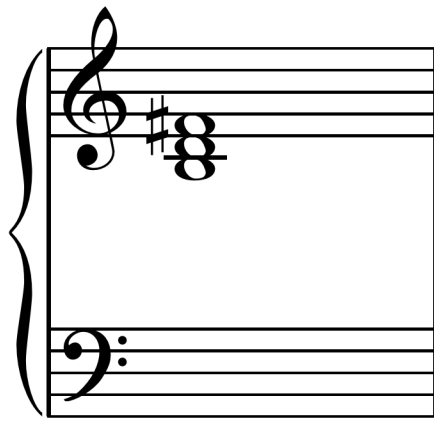
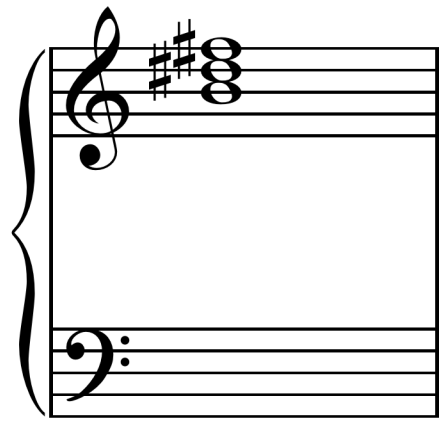
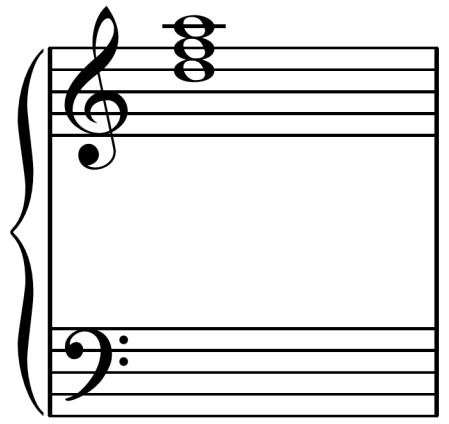
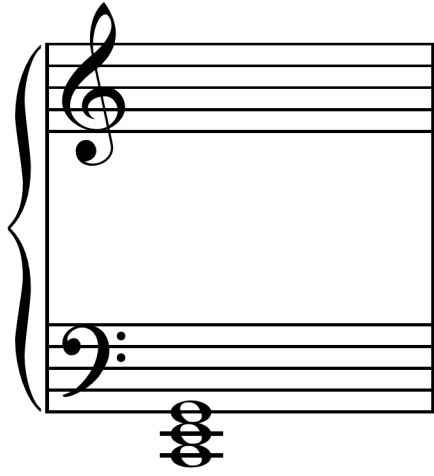
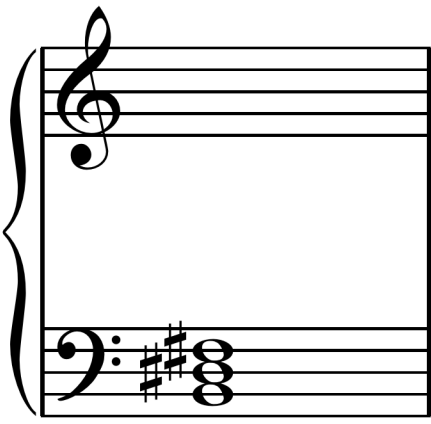
Musical staff with treble clef and bass clef. The treble clef contains a chord of G<sub>4</sub><sup>#</sup>, B<sub>4</sub>, and D<sub>5</sub>. A sharp key signature is present.

Musical staff with treble clef and bass clef. The bass clef contains a chord of G<sub>2</sub>, B<sub>1</sub>, and D<sub>2</sub>. A flat key signature is present.

Musical staff with treble clef and bass clef. The bass clef contains a chord of G<sub>2</sub>, B<sub>1</sub>, and D<sub>2</sub>.

Musical staff with treble clef and bass clef. The treble clef contains a chord of G<sub>4</sub>, B<sub>4</sub>, and D<sub>5</sub>.





|

|

A musical staff system with a treble clef on the top staff and a bass clef on the bottom staff. A key signature of one flat (B-flat) is indicated. A chord consisting of B-flat, D, and F is written in the bass clef.

A musical staff system with a treble clef on the top staff and a bass clef on the bottom staff. A key signature of one flat (B-flat) is indicated. A chord consisting of B-flat, D, and F is written in the treble clef.

A musical staff system with a treble clef on the top staff and a bass clef on the bottom staff. A key signature of one flat (B-flat) is indicated. A chord consisting of B-flat, D, and F is written in the treble clef.

A musical staff system with a treble clef on the top staff and a bass clef on the bottom staff. A key signature of one flat (B-flat) is indicated. A chord consisting of B-flat, D, and F is written in the treble clef.

A musical staff system with a treble clef on the top staff and a bass clef on the bottom staff. A key signature of one flat (B-flat) is indicated. A chord consisting of B-flat, D, and F is written in the treble clef.

A musical staff system with a treble clef on the top staff and a bass clef on the bottom staff. A key signature of one flat (B-flat) is indicated. A chord consisting of B-flat, D, and F is written in the treble clef.

A musical staff system with a treble clef on the top staff and a bass clef on the bottom staff. A key signature of one flat (B-flat) is indicated. A chord consisting of B-flat, D, and F is written in the bass clef.

A musical staff system with a treble clef on the top staff and a bass clef on the bottom staff. A key signature of one flat (B-flat) is indicated. A chord consisting of B-flat, D, and F is written in the treble clef.

A musical staff system with a treble clef on the top staff and a bass clef on the bottom staff. A key signature of two flats (B-flat and E-flat) is indicated. A chord consisting of B-flat, D, and F is written in the treble clef.

|

|

First measure of a piano piece. The treble clef staff is empty. The bass clef staff contains a chord with a flat key signature and notes G2, Bb2, and D3.

Second measure of a piano piece. The treble clef staff contains a chord with a flat key signature and notes G3, Bb3, and D4. The bass clef staff is empty.

Third measure of a piano piece. The treble clef staff contains a chord with a double flat key signature and notes G3, Bbb3, and D4. The bass clef staff is empty.

Fourth measure of a piano piece. The treble clef staff is empty. The bass clef staff contains a chord with a flat key signature and notes G2, Bb2, and D3.

Fifth measure of a piano piece. The treble clef staff contains a chord with a flat key signature and notes G3, Bb3, and D4. The bass clef staff is empty.

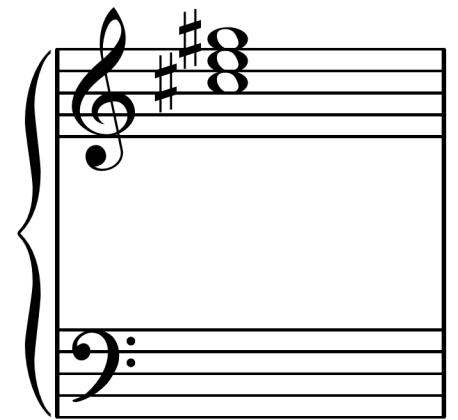
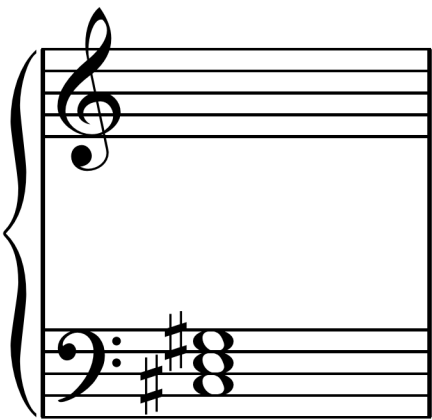
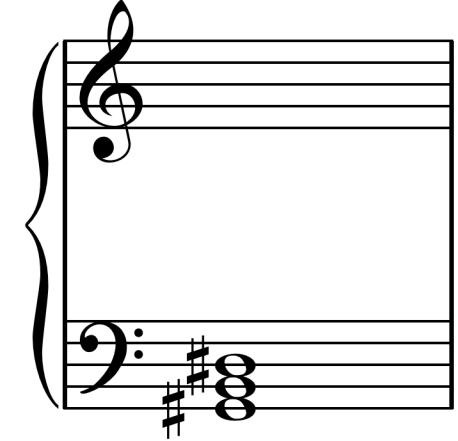
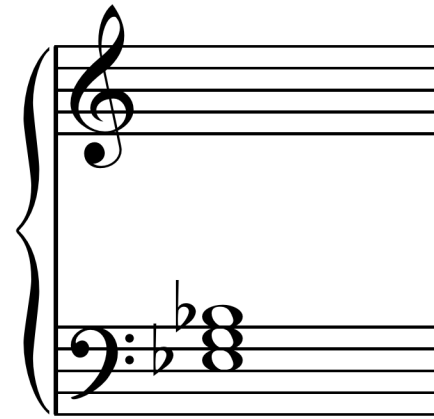
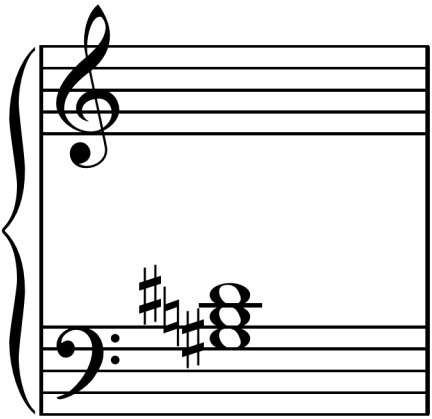
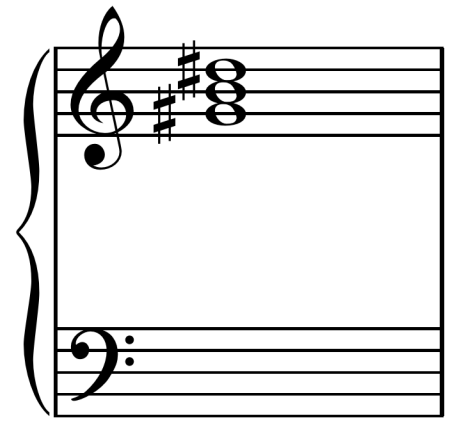
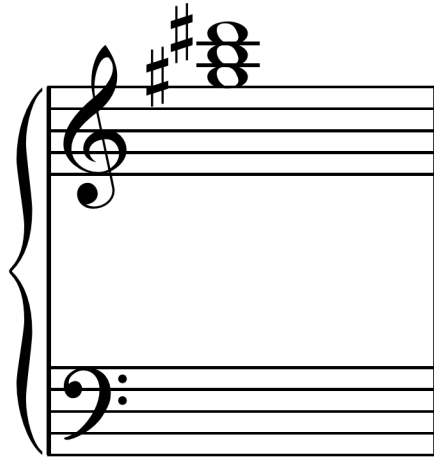
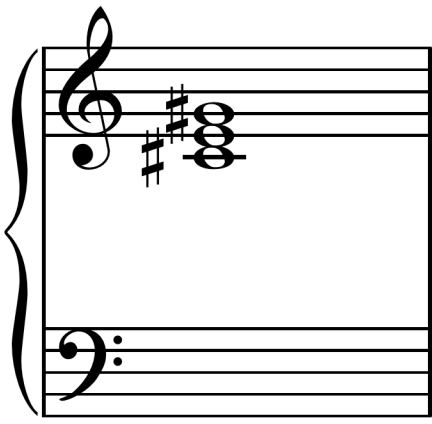
Sixth measure of a piano piece. The treble clef staff is empty. The bass clef staff contains a chord with a flat key signature and notes G2, Bb2, and D3.

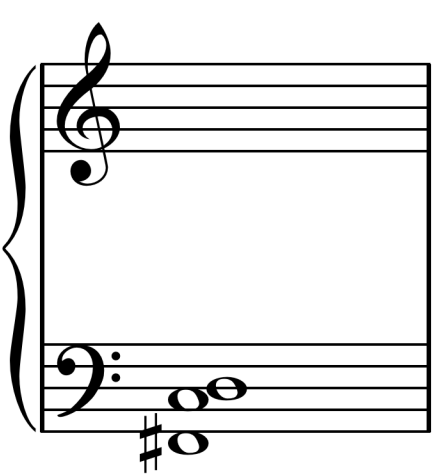
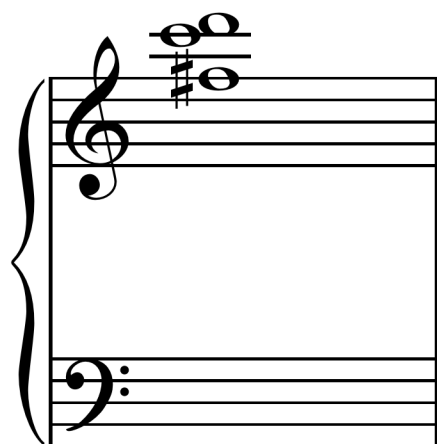
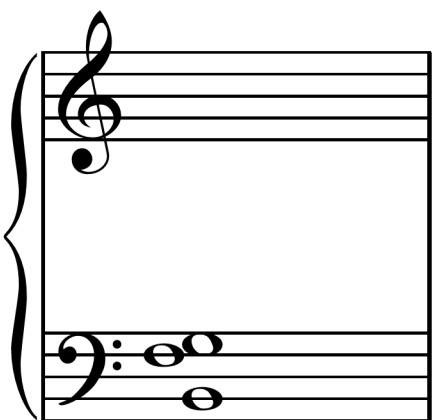
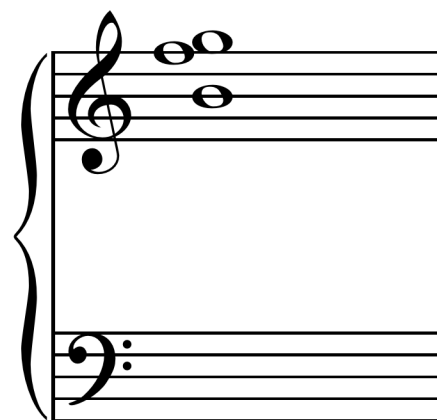
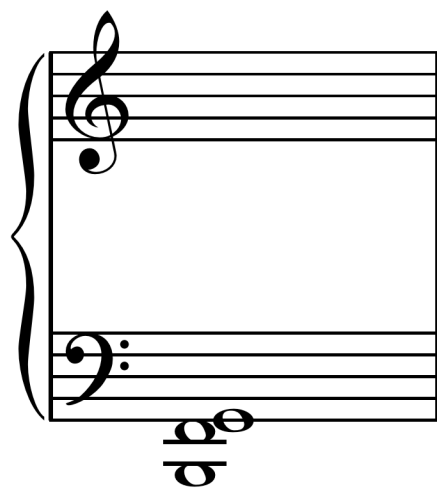
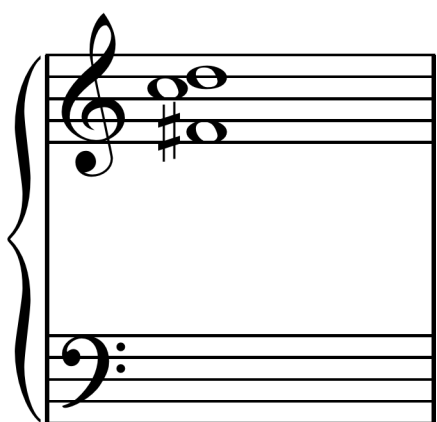
Seventh measure of a piano piece. The treble clef staff contains a chord with a double flat key signature and notes G3, Bbb3, and D4. The bass clef staff is empty.

Eighth measure of a piano piece. The treble clef staff contains a chord with a double flat key signature and notes G3, Bbb3, and D4. The bass clef staff is empty.

Ninth measure of a piano piece. The treble clef staff is empty. The bass clef staff contains a chord with a flat key signature and notes G2, Bb2, and D3.







First system of a grand staff. The treble clef staff is empty. The bass clef staff contains a sharp sign (#) on the first line, followed by two eighth notes: one on the first space (F#) and one on the second line (G).

Second system of a grand staff. The treble clef staff contains a sharp sign (#) on the first line, followed by two eighth notes: one on the first space (F#) and one on the second line (G). The bass clef staff is empty.

Third system of a grand staff. The treble clef staff contains a sharp sign (#) on the first line, followed by two eighth notes: one on the first space (F#) and one on the second line (G). The bass clef staff is empty.

Fourth system of a grand staff. The treble clef staff contains a sharp sign (#) on the first line, followed by two eighth notes: one on the first space (F#) and one on the second line (G). The bass clef staff is empty.

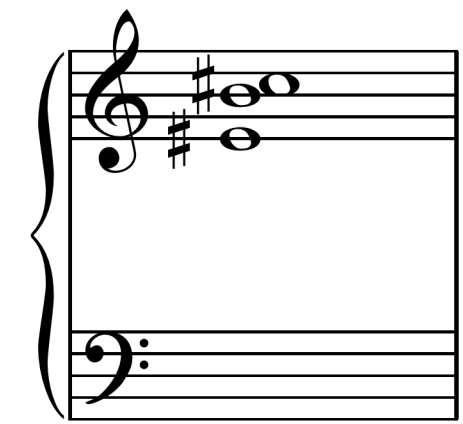
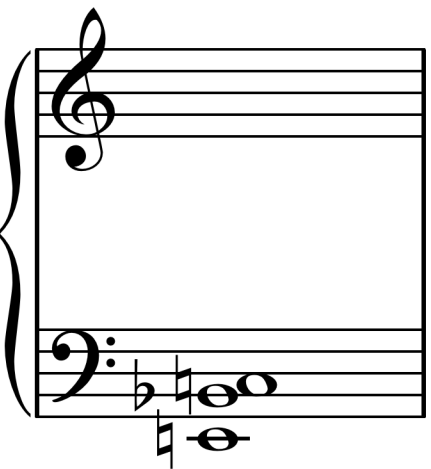
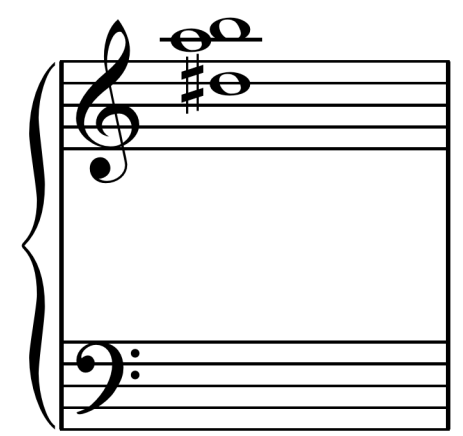
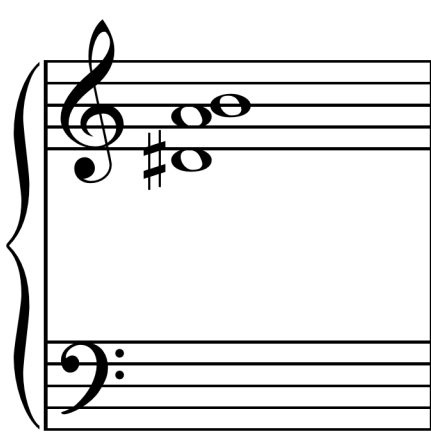
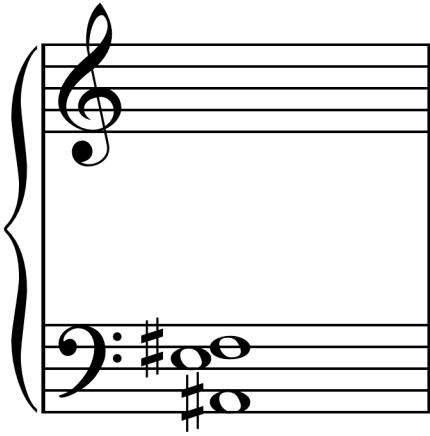
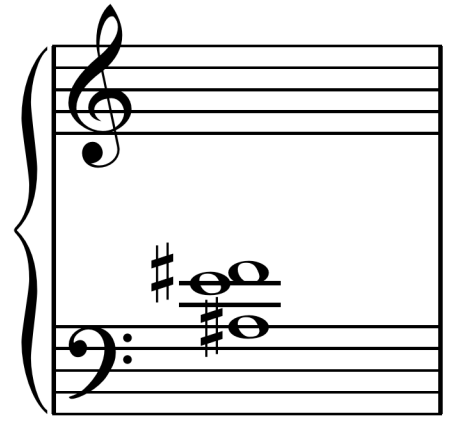
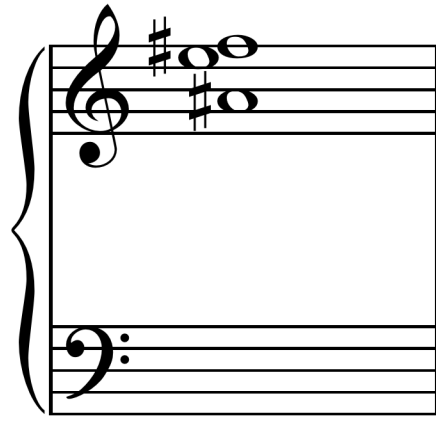
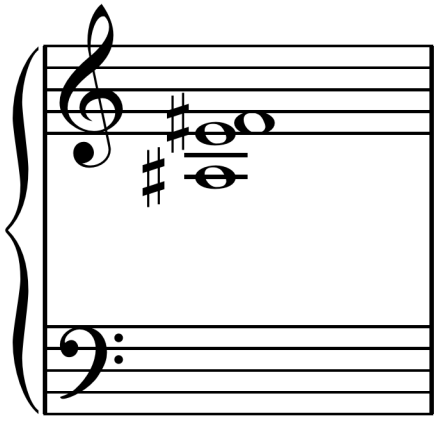
Fifth system of a grand staff. The treble clef staff contains a sharp sign (#) on the first line, followed by two eighth notes: one on the first space (F#) and one on the second line (G). The bass clef staff is empty.

Sixth system of a grand staff. The treble clef staff is empty. The bass clef staff contains a sharp sign (#) on the first line, followed by two eighth notes: one on the first space (F#) and one on the second line (G).

Seventh system of a grand staff. The treble clef staff contains a sharp sign (#) on the first line, followed by two eighth notes: one on the first space (F#) and one on the second line (G). The bass clef staff is empty.

Eighth system of a grand staff. The treble clef staff is empty. The bass clef staff contains a sharp sign (#) on the first line, followed by two eighth notes: one on the first space (F#) and one on the second line (G).

Ninth system of a grand staff. The treble clef staff is empty. The bass clef staff contains a sharp sign (#) on the first line, followed by two eighth notes: one on the first space (F#) and one on the second line (G).



First measure of a piano piece. The treble clef staff is empty. The bass clef staff contains a key signature of one flat (B-flat) and a whole note chord consisting of B-flat, D, and F.

Second measure of a piano piece. The treble clef staff contains a key signature of one flat (B-flat) and a whole note chord consisting of B-flat, D, and F. The bass clef staff is empty.

Third measure of a piano piece. The treble clef staff contains a key signature of one flat (B-flat) and a whole note chord consisting of B-flat, D, and F. The bass clef staff is empty.

Fourth measure of a piano piece. The treble clef staff contains a key signature of one flat (B-flat) and a whole note chord consisting of B-flat, D, and F. The bass clef staff is empty.

Fifth measure of a piano piece. The treble clef staff contains a key signature of one flat (B-flat) and a whole note chord consisting of B-flat, D, and F. The bass clef staff is empty.

Sixth measure of a piano piece. The treble clef staff is empty. The bass clef staff contains a key signature of one flat (B-flat) and a whole note chord consisting of B-flat, D, and F.

Seventh measure of a piano piece. The treble clef staff contains a key signature of one flat (B-flat) and a whole note chord consisting of B-flat, D, and F. The bass clef staff is empty.

Eighth measure of a piano piece. The treble clef staff is empty. The bass clef staff contains a key signature of two flats (B-flat and E-flat) and a whole note chord consisting of B-flat, D, and F.

Ninth measure of a piano piece. The treble clef staff is empty. The bass clef staff contains a key signature of one flat (B-flat) and a whole note chord consisting of B-flat, D, and F.

Musical staff with treble clef and bass clef. The bass clef contains notes Bb, C, D, E.

Musical staff with treble clef and bass clef. The bass clef contains notes Bb, C, D, E.

Musical staff with treble clef and bass clef. The treble clef contains notes Bb, C, D, E.

Musical staff with treble clef and bass clef. The bass clef contains notes Bb, C, D, E.

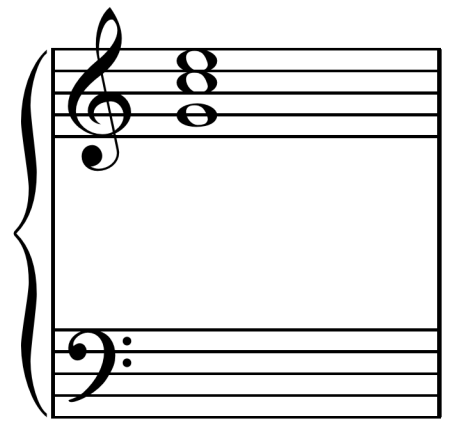
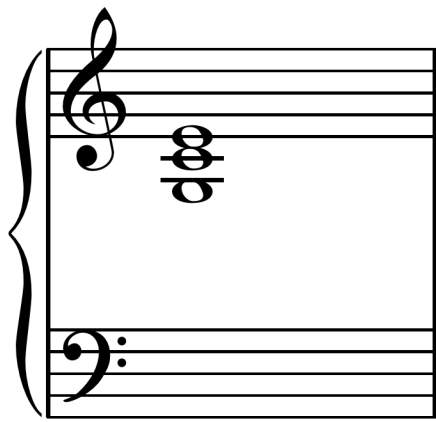
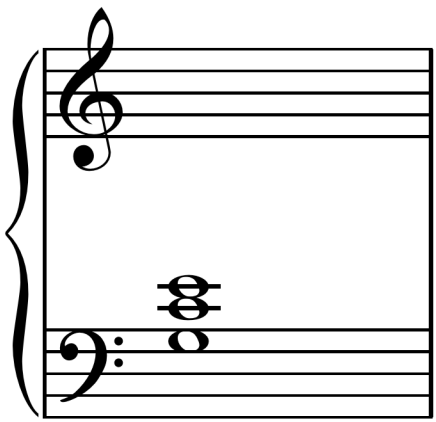
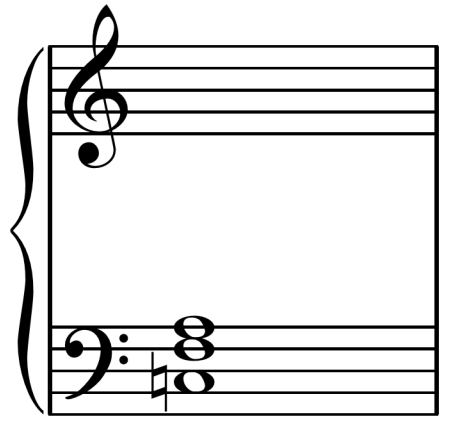
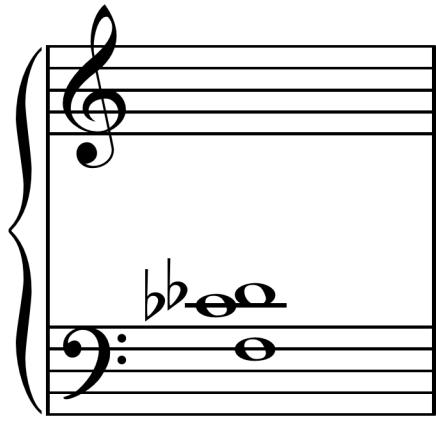
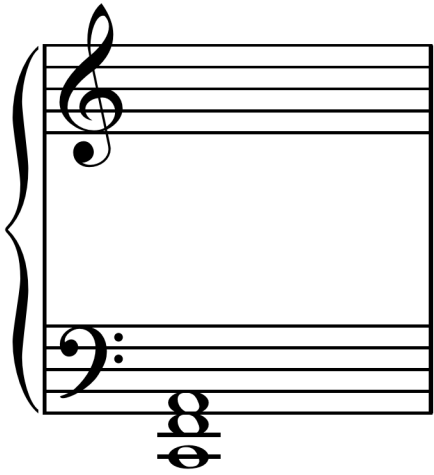
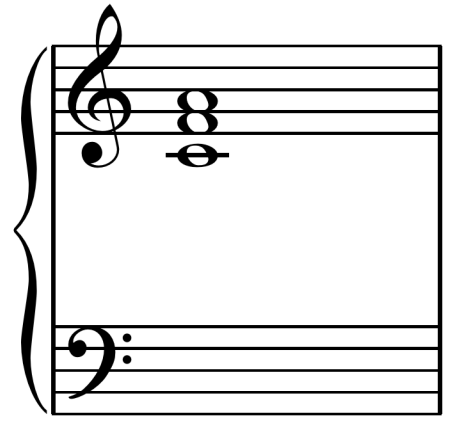
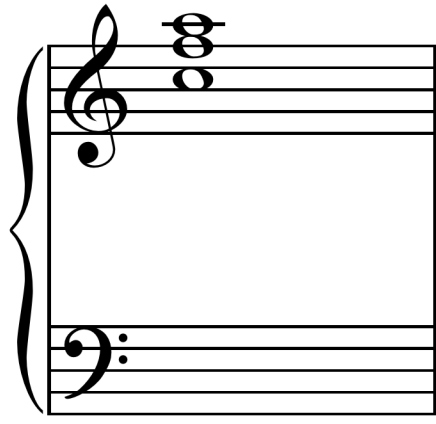
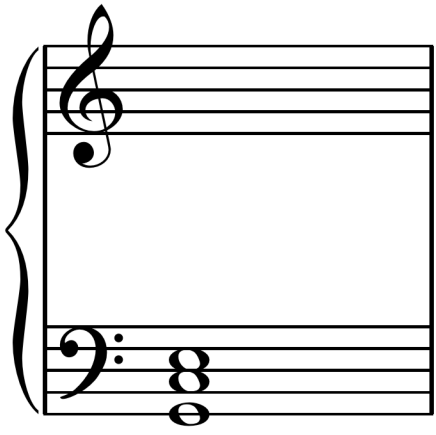
Musical staff with treble clef and bass clef. The treble clef contains notes Bb, C, D, E.

Musical staff with treble clef and bass clef. The treble clef contains notes Bb, C, D, E.

Musical staff with treble clef and bass clef. The treble clef contains notes Bb, C, D, E.

Musical staff with treble clef and bass clef. The bass clef contains notes Bb, C, D, E.

Musical staff with treble clef and bass clef. The treble clef contains notes Bb, C, D, E.



|

|

A musical staff system with a treble clef and a bass clef. The treble staff is empty. The bass staff contains a chord of G2, B1, and D2.

A musical staff system with a treble clef and a bass clef. The treble staff is empty. The bass staff contains a chord of Gb2, Bb1, and D2.

A musical staff system with a treble clef and a bass clef. The treble staff is empty. The bass staff contains a chord of Gb2, Bb1, and D2.

A musical staff system with a treble clef and a bass clef. The treble staff contains a chord of Gb2, Bb1, and D2. The bass staff is empty.

A musical staff system with a treble clef and a bass clef. The treble staff contains a chord of G2, B1, and D2. The bass staff is empty.

A musical staff system with a treble clef and a bass clef. The treble staff contains a chord of Gb2, Bb1, and D2. The bass staff is empty.

A musical staff system with a treble clef and a bass clef. The treble staff contains a chord of Gb2, Bb1, and D2. The bass staff is empty.

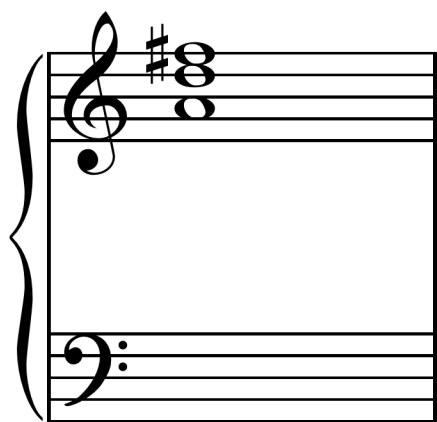
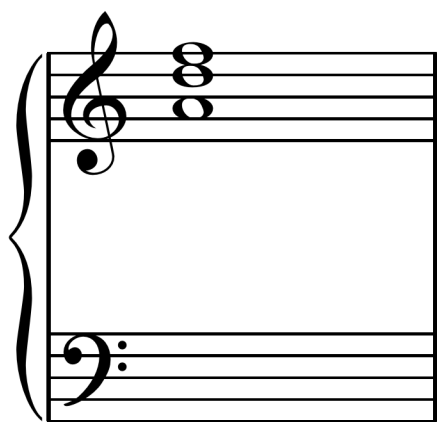
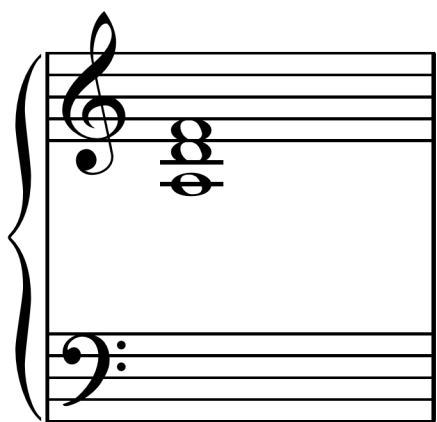
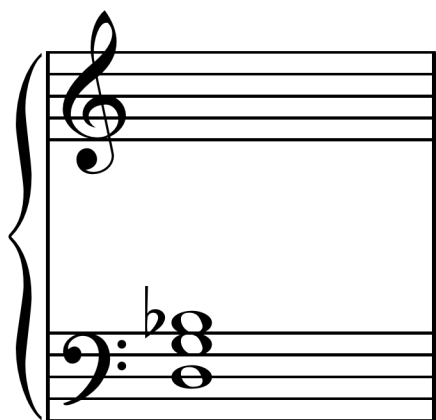
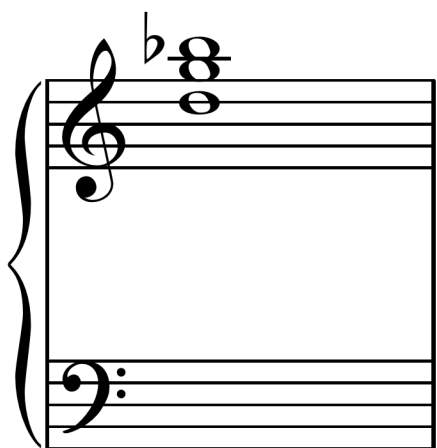
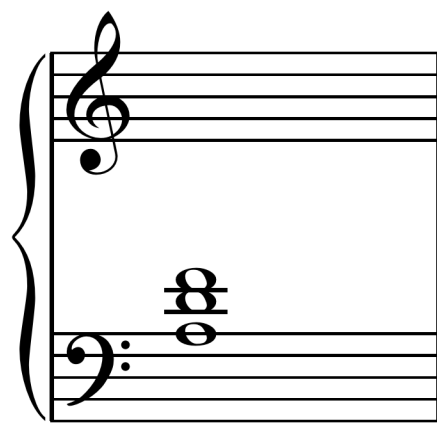
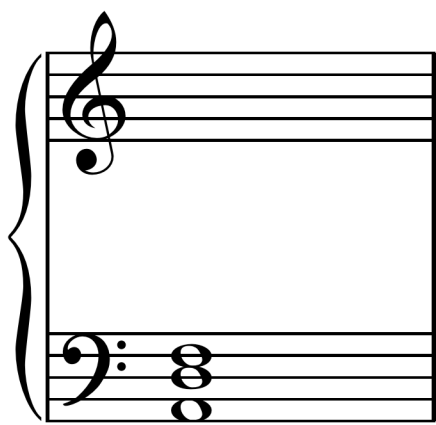
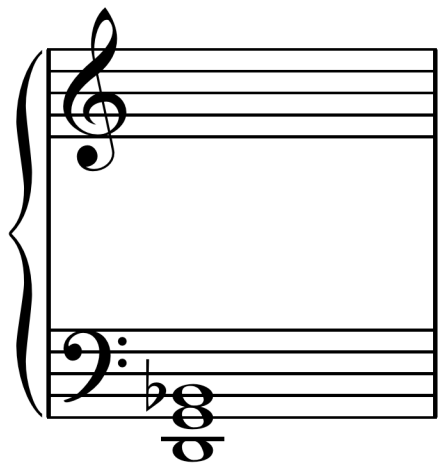
A musical staff system with a treble clef and a bass clef. The treble staff contains a chord of Gb2, Bb1, and D2. The bass staff is empty.

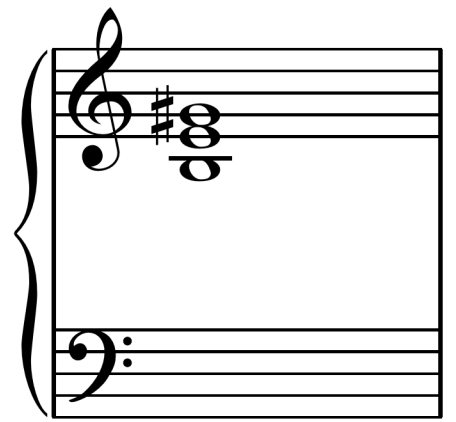
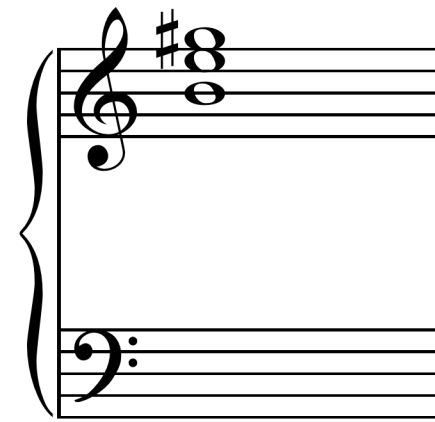
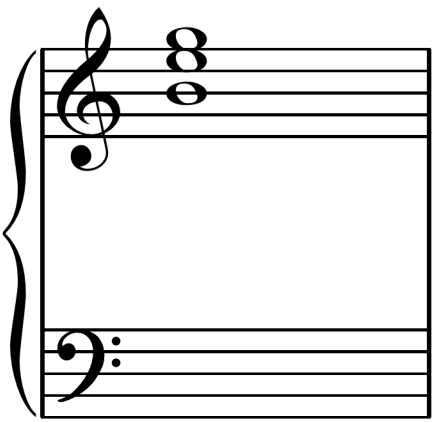
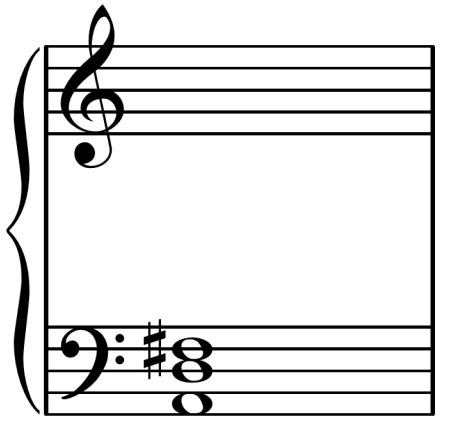
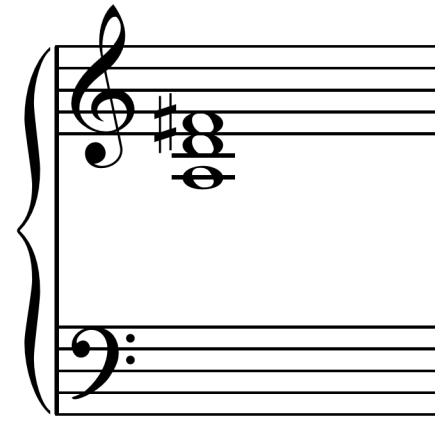
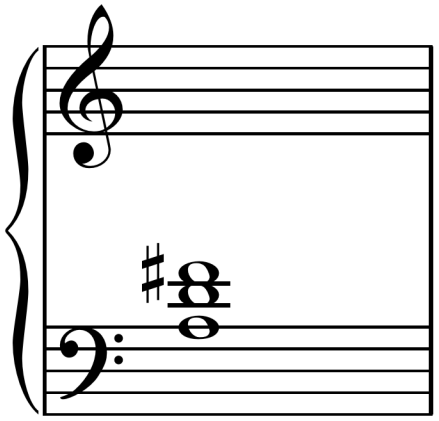
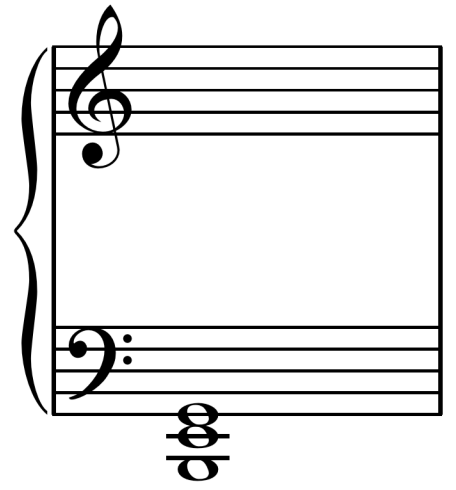
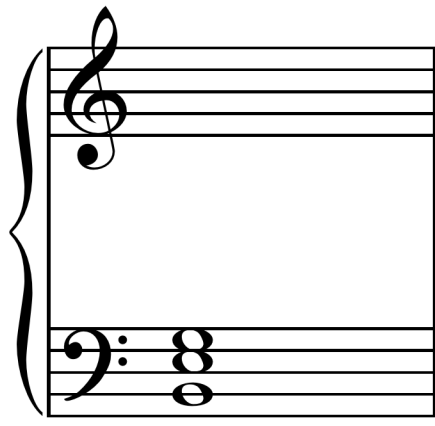
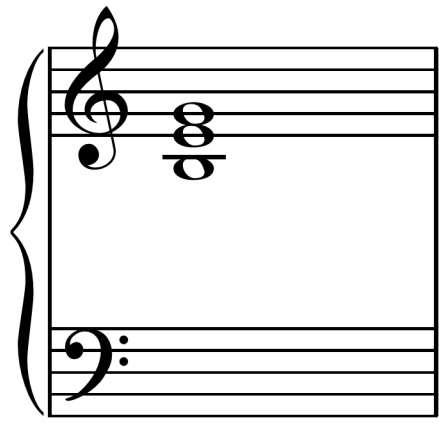
A musical staff system with a treble clef and a bass clef. The treble staff is empty. The bass staff contains a chord of Gb2, Bb1, and D2.

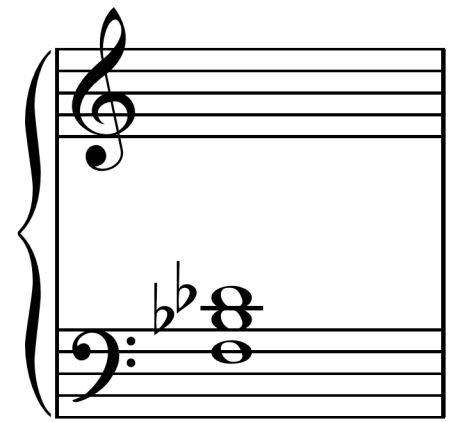
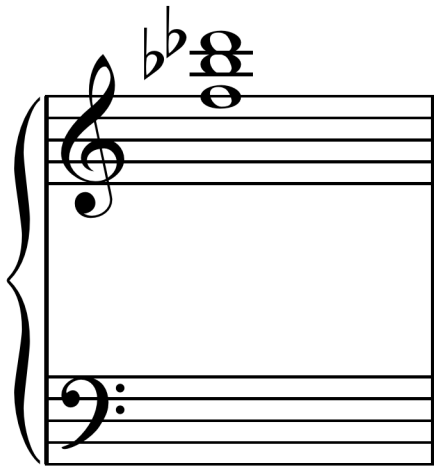
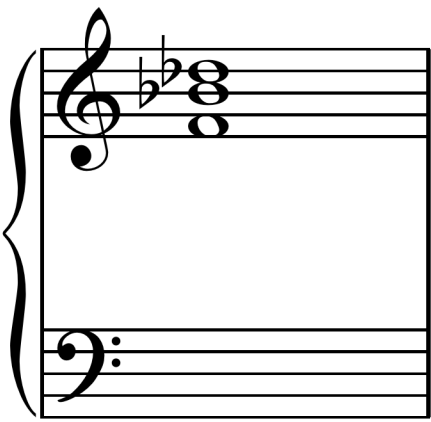
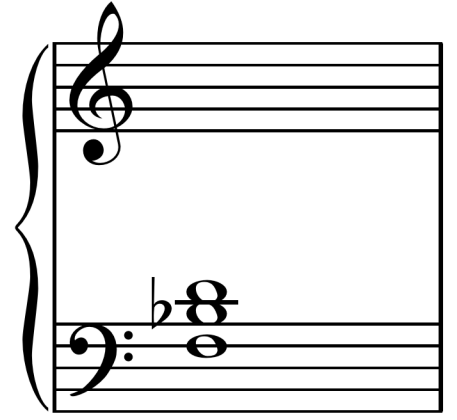
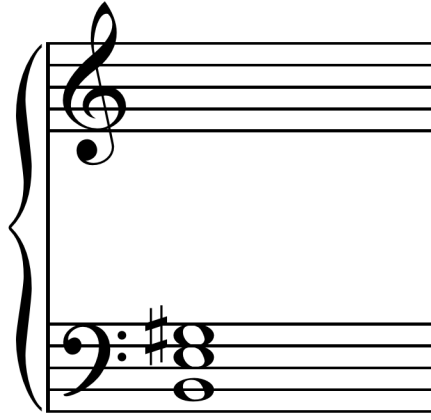
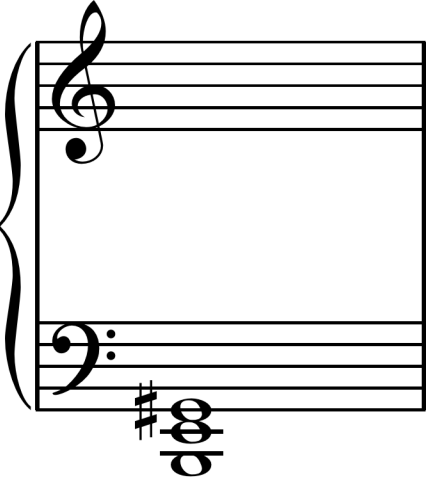
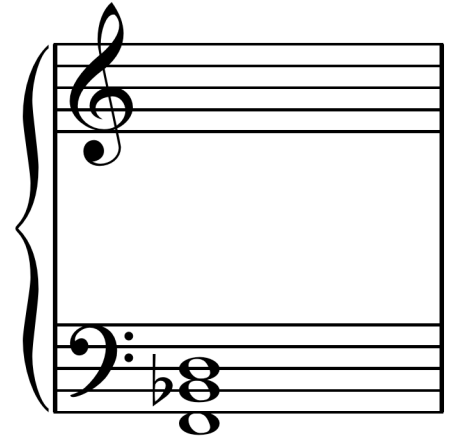
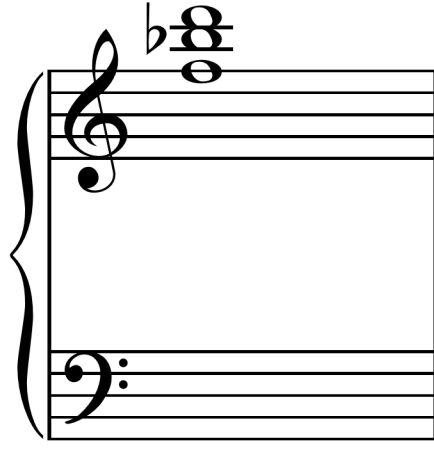
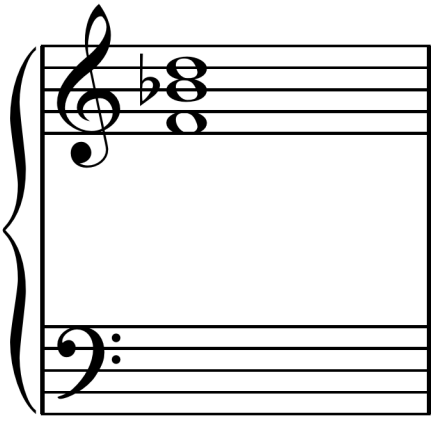
|

|









A musical staff system with a treble clef on the top staff and a bass clef on the bottom staff. The bass clef contains a chord of two notes: a flat B (Bb) and a flat D (Db).

A musical staff system with a treble clef on the top staff and a bass clef on the bottom staff. The bass clef contains a chord of three notes: a flat B (Bb), a flat D (Db), and a flat F (Fb).

A musical staff system with a treble clef on the top staff and a bass clef on the bottom staff. The bass clef contains a chord of three notes: a flat B (Bb), a flat D (Db), and a flat G (Gb).

A musical staff system with a treble clef on the top staff and a bass clef on the bottom staff. The treble clef contains a chord of two notes: a flat B (Bb) and a flat D (Db). The bass clef is empty.

A musical staff system with a treble clef on the top staff and a bass clef on the bottom staff. Both staves are empty.

A musical staff system with a treble clef on the top staff and a bass clef on the bottom staff. The treble clef contains a chord of three notes: a flat B (Bb), a flat D (Db), and a flat F (Fb). The bass clef is empty.

A musical staff system with a treble clef on the top staff and a bass clef on the bottom staff. Both staves are empty.

A musical staff system with a treble clef on the top staff and a bass clef on the bottom staff. The treble clef contains a chord of three notes: a flat B (Bb), a flat D (Db), and a flat F (Fb). The bass clef is empty.

A musical staff system with a treble clef on the top staff and a bass clef on the bottom staff. The treble clef contains a chord of three notes: a flat B (Bb), a flat D (Db), and a flat G (Gb). The bass clef is empty.

Musical staff with treble clef and bass clef. The bass clef has two sharps (F# and C#) and two notes (G and C).

Musical staff with treble clef and bass clef. The bass clef has three sharps (F#, C#, and G#) and two notes (G and C).

Musical staff with treble clef and bass clef. The bass clef has four sharps (F#, C#, G#, and D#) and two notes (G and C).

Musical staff with treble clef and bass clef. The bass clef has two sharps (F# and C#) and two notes (G and C).

Musical staff with treble clef and bass clef. The treble clef has two sharps (F# and C#) and two notes (G and C). The bass clef has two notes (G and C).

Musical staff with treble clef and bass clef. The treble clef has three sharps (F#, C#, and G#) and two notes (G and C). The bass clef has two notes (G and C).

Musical staff with treble clef and bass clef. The treble clef has four sharps (F#, C#, G#, and D#) and two notes (G and C). The bass clef has two notes (G and C).

Musical staff with treble clef and bass clef. The treble clef has three sharps (F#, C#, and G#) and two notes (G and C). The bass clef has two notes (G and C).

Musical staff with treble clef and bass clef. The treble clef has two flats (Bb and Eb) and two notes (G and C). The bass clef has two notes (G and C).

First system of a grand staff. The treble clef staff is empty. The bass clef staff contains a key signature of two flats (Bb and Eb) and a triad of notes: Bb, Eb, and Gb.

Second system of a grand staff. The treble clef staff contains a key signature of two flats and a triad of notes: Bb, Eb, and Gb. The bass clef staff is empty.

Third system of a grand staff. The treble clef staff contains a key signature of two flats and a triad of notes: Bb, Eb, and Gb. The bass clef staff is empty.

Fourth system of a grand staff. The treble clef staff is empty. The bass clef staff contains a key signature of two flats and a triad of notes: Bb, Eb, and Gb.

Fifth system of a grand staff. The treble clef staff contains a key signature of two flats and a triad of notes: Bb, Eb, and Gb. The bass clef staff is empty.

Sixth system of a grand staff. The treble clef staff is empty. The bass clef staff contains a key signature of two flats and a triad of notes: Bb, Eb, and Gb.

Seventh system of a grand staff. The treble clef staff contains a key signature of two flats and a triad of notes: Bb, Eb, and Gb. The bass clef staff is empty.

Eighth system of a grand staff. The treble clef staff contains a key signature of two flats and a triad of notes: Bb, Eb, and Gb. The bass clef staff is empty.

Ninth system of a grand staff. The treble clef staff is empty. The bass clef staff contains a key signature of two flats and a triad of notes: Bb, Eb, and Gb.

Muñecos de nieve  
TONALES



IV V I

Diverpiano by Laura Prada

Muñecos de nieve  
TONALES



IV V I

Diverpiano by Laura Prada

Muñecos de nieve  
TONALES



IV V I

Diverpiano by Laura Prada

Muñecos de nieve  
TONALES



IV V I

Diverpiano by Laura Prada

Muñecos de nieve  
TONALES



IV V I

Diverpiano by Laura Prada

Muñecos de nieve  
TONALES



IV V I

Diverpiano by Laura Prada

Muñecos de nieve  
TONALES



IV V I

Diverpiano by Laura Prada

Muñecos de nieve  
TONALES



IV V I

Diverpiano by Laura Prada

Muñecos de nieve  
TONALES



IV V I

Diverpiano by Laura Prada